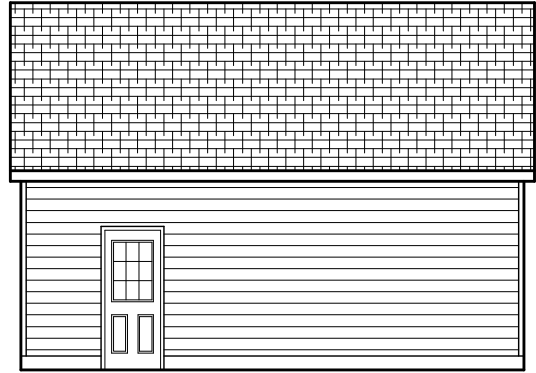
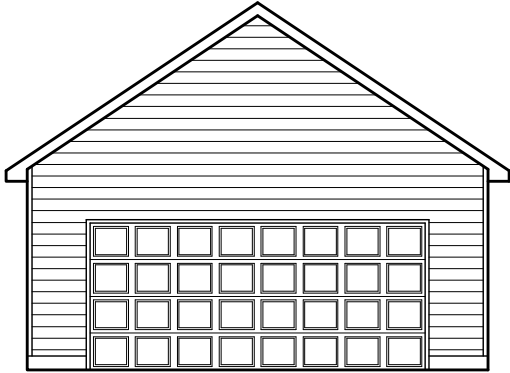
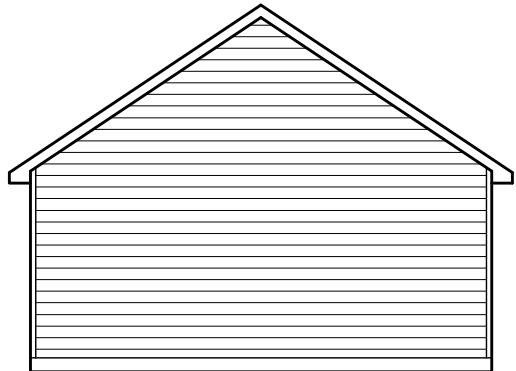
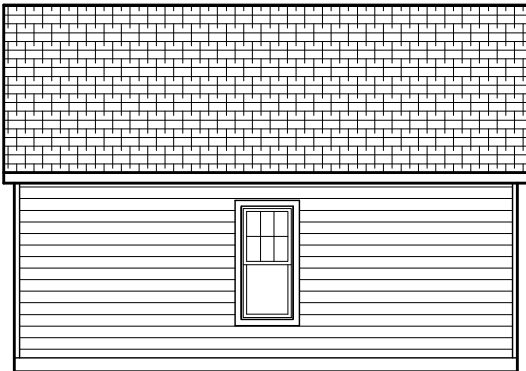
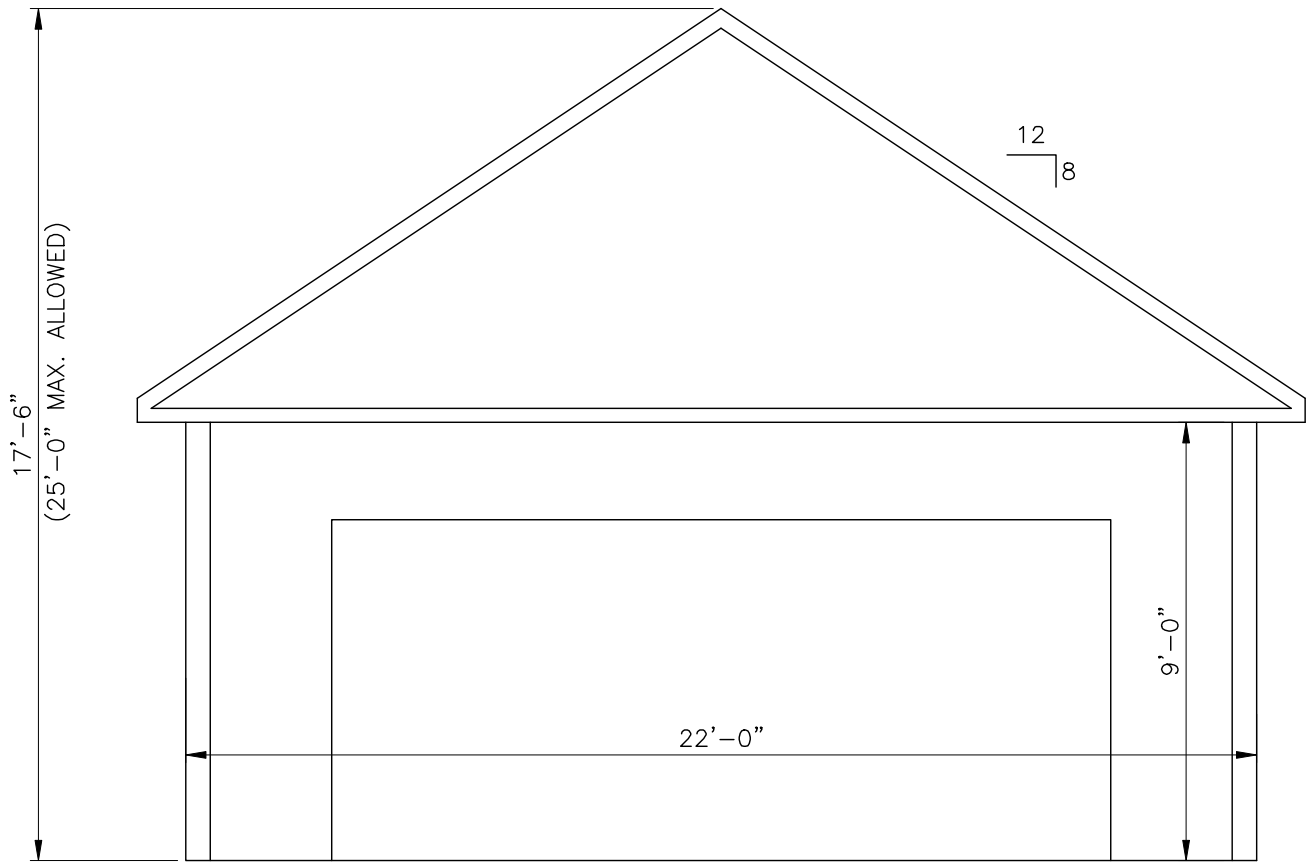


DETACHED GARAGE 1ST FLR. PLAN
OPTION "A"

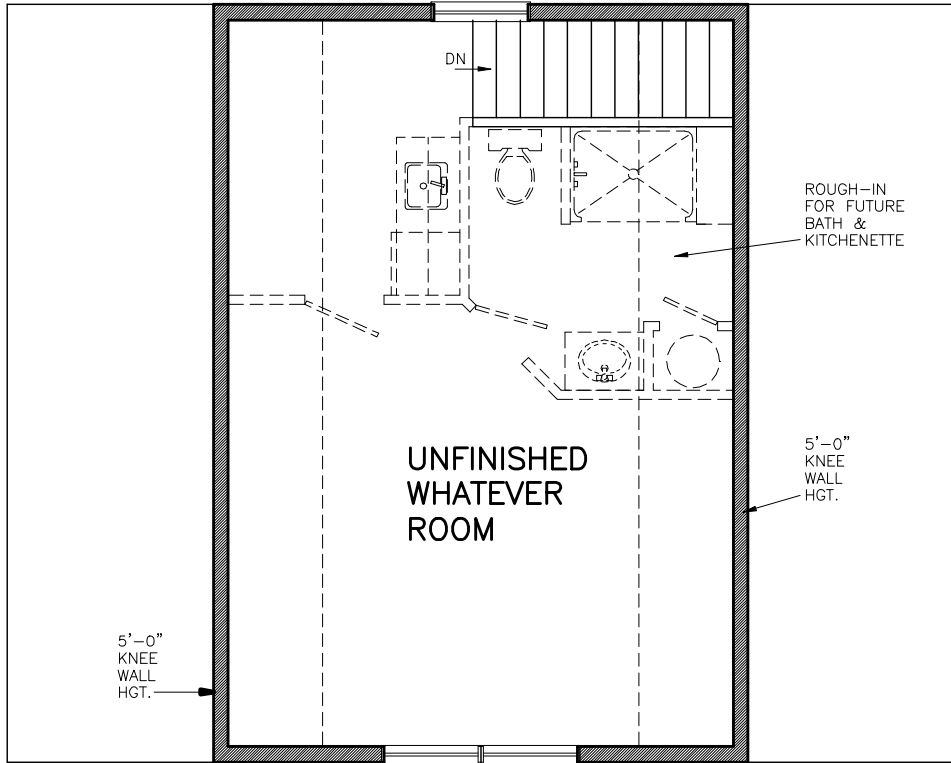


**DETACHED GARAGE OPTION "A"
ELEVATIONS**

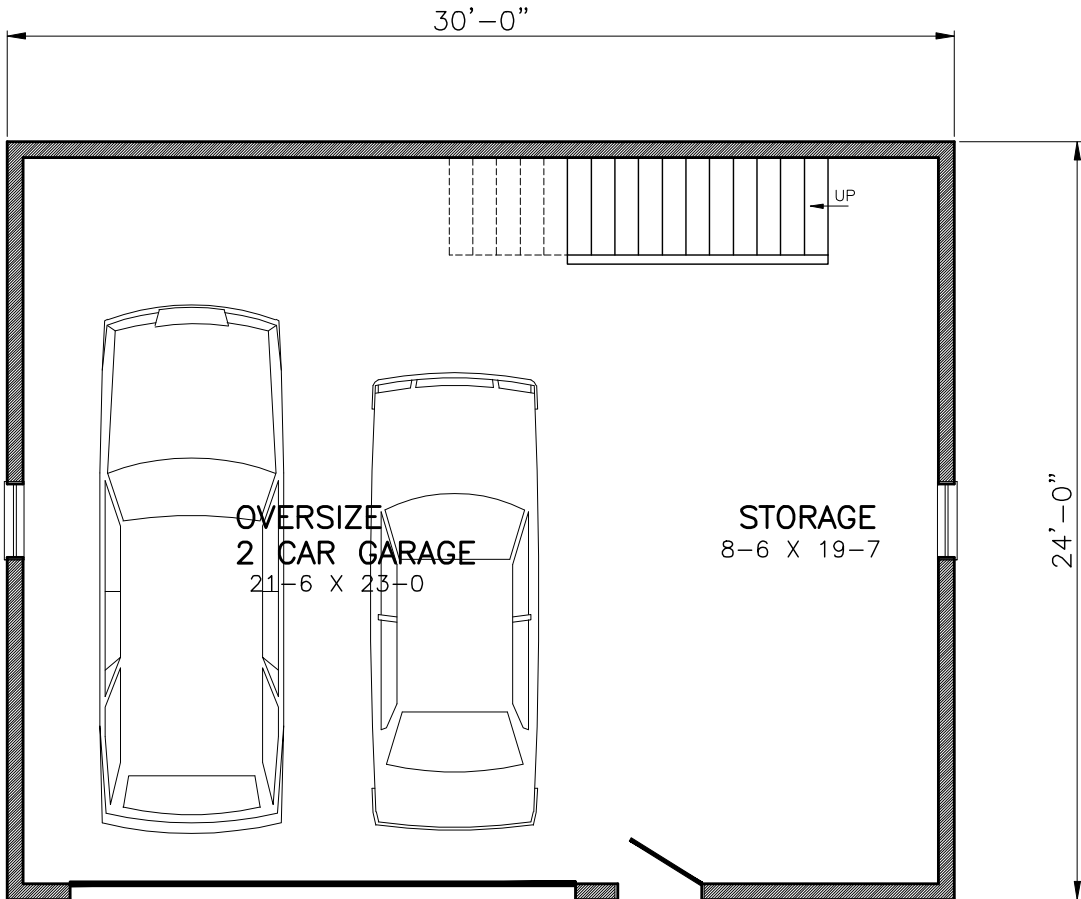




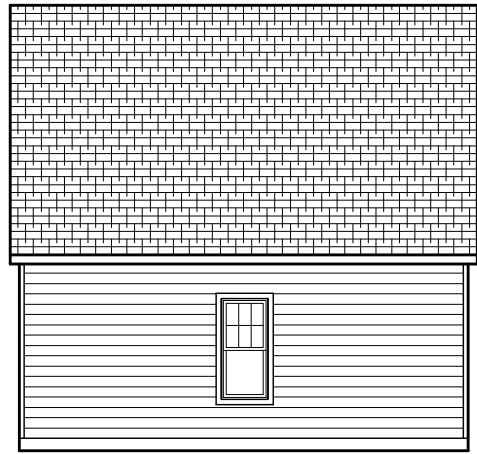
DETACHED GARAGE OPTION "A"
CROSS SECTION



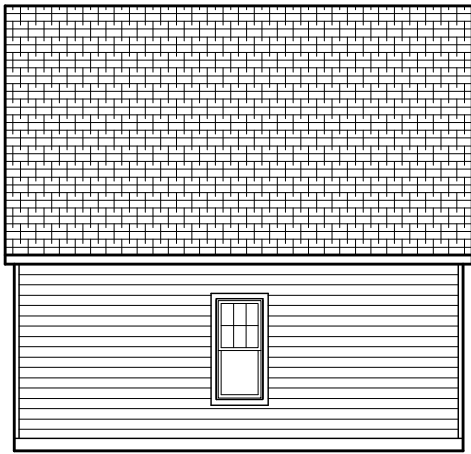
**DETACHED GARAGE 2ND FLR. PLAN
400 S.F. UNFINISHED
OPTION "B"**

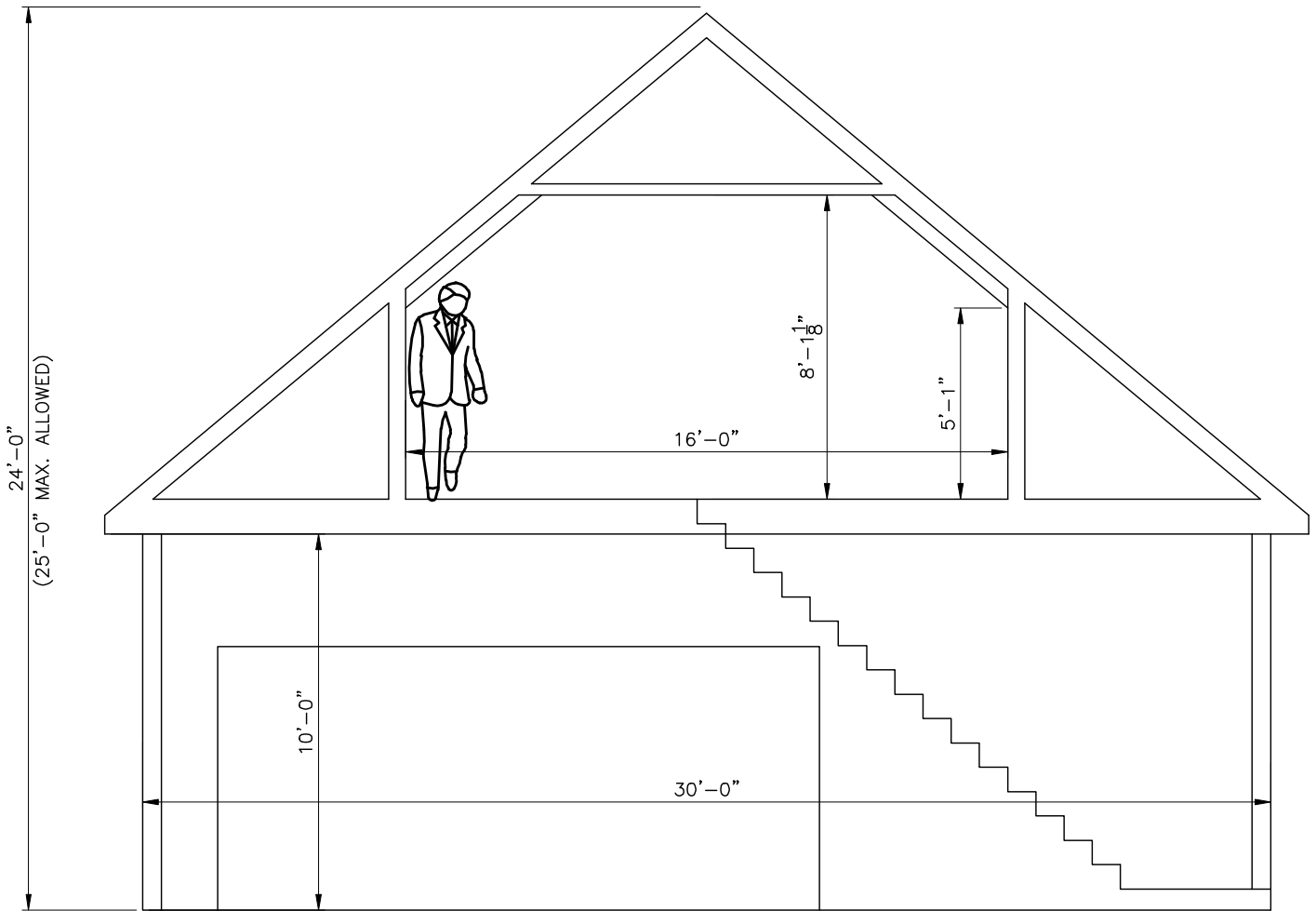


**DETACHED GARAGE 1ST FLR. PLAN
OPTION "B"**

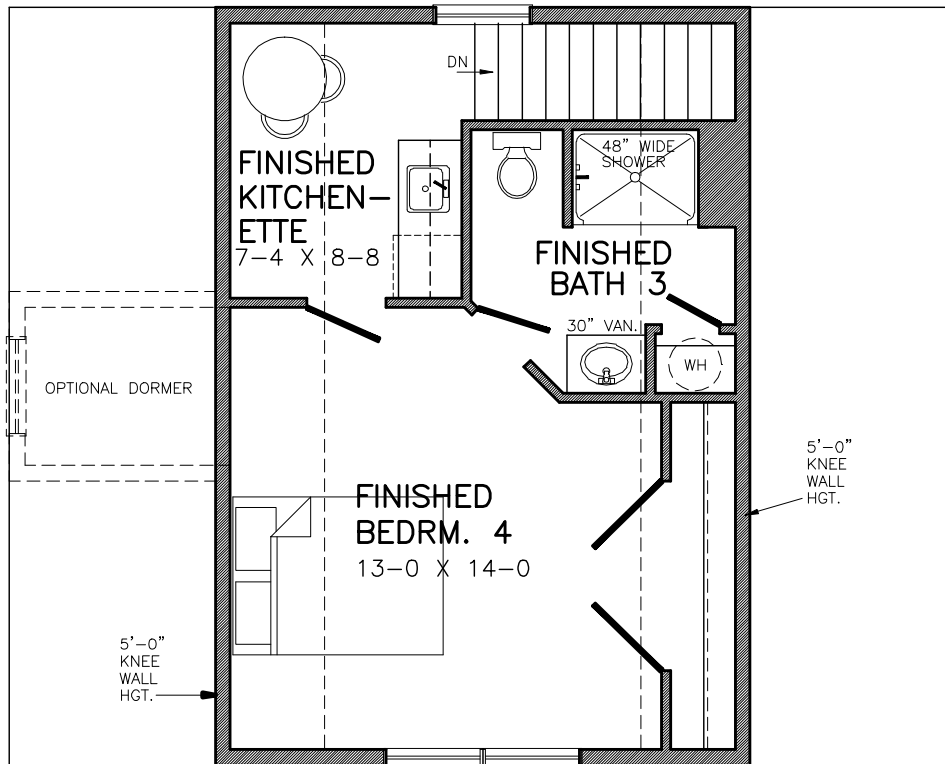


**DETACHED GARAGE OPTION "B"
ELEVATIONS**

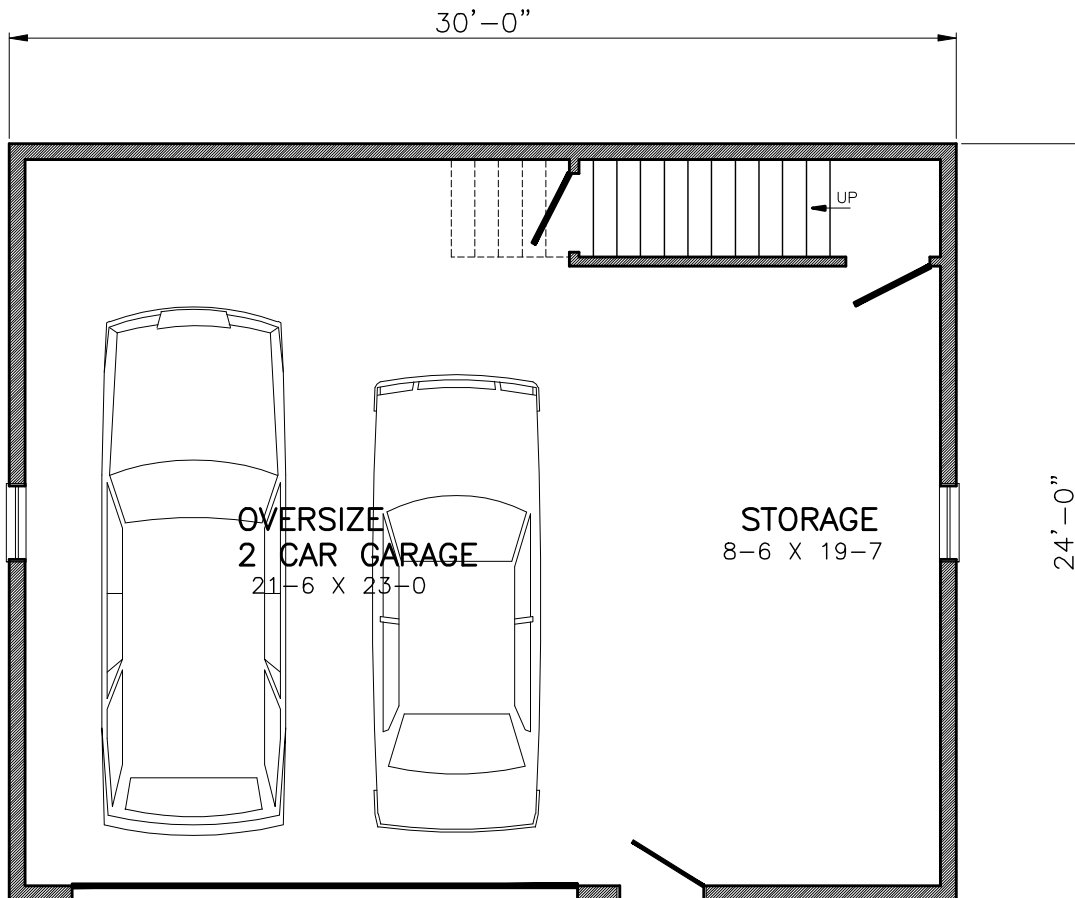




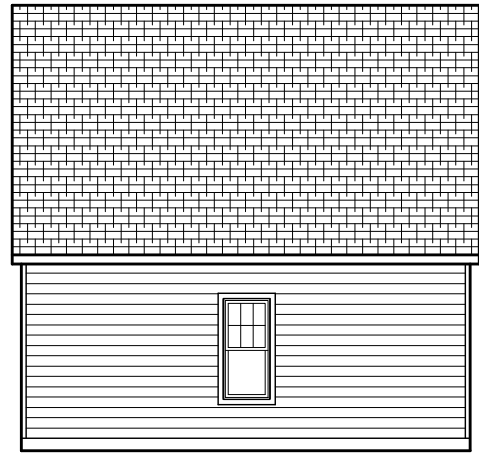
DETACHED GARAGE OPTION "B"
CROSS SECTION



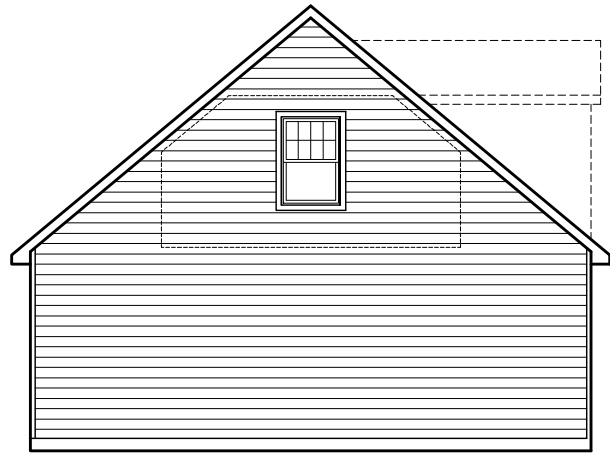
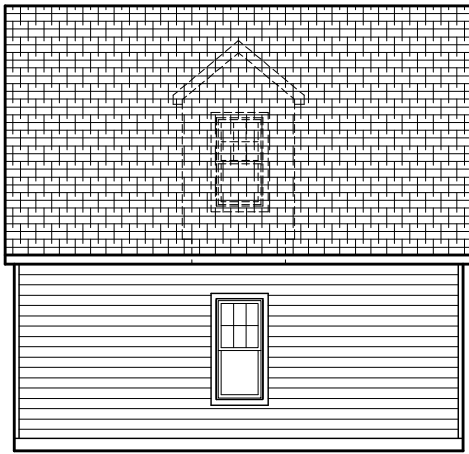
**DETACHED GARAGE 2ND FLR. PLAN
400 S.F. OPTION "C"**



**DETACHED GARAGE 1ST FLR. PLAN
OPTION "C"**



**DETACHED GARAGE OPTION "C"
ELEVATIONS**



THE
evolve
S E R I E S
BY HESS HOME BUILDERS

Garage Option pricing for South Meadow at Wetherburn

Garage Option A: Standard
Includes 22' x 22' 2 car garage with 16' garage door

Garage Option B: Option Price \$17,790

Includes 24' x 30' oversized 2 car garage with 16' garage door, room trusses and sub floor on second floor, stairs and utilities run to the garage for future finishing of living area including "WHATEVER ROOM".

Garage Option C: Option Price \$39,500

Includes 24' x 30' oversized garage with 16' garage door, fully finished 400 square feet of living are above garage including kitchenette, full bath and "WHATEVER ROOM".